






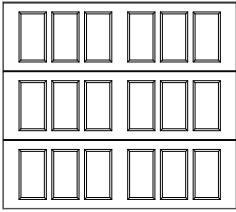
Ridgefield panel, Black finish, Plain Window Square

**DOOR FEATURES**

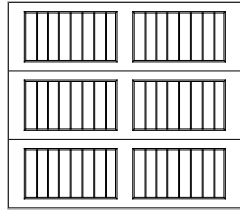
- Three Sections for 7' High Doors**  
Provide large steel embossments for a dramatic appearance.
- Foamed-in-Place Polyurethane Insulation**  
Provides thermal efficiency with an R-value of 12\*.
- TorqueMaster® Plus Counter Balance System**  
Contains springs safely inside a steel tube to prevent accidental release of tension that could cause injury and features anti-drop safety technology.
- High Cycle Spring Option**  
Choose a 25,000 cycle spring for more than twice the life of a standard torsion spring.
- Pinch-Resistant Door Panels**  
Helps prevent finger injuries while the door is closing.
- Wind Load Options**    
Available with structural reinforcements for use in coastal or high wind region.
- Limited Lifetime Warranty** 

\*Wayne Dalton uses a calculated door section R-value for our insulated doors.

# 1 Choose Your Style



Vicksburg



Ridgefield

Doors taller than 7' will have 4-section styling



*Ridgefield panel, Weathered Gray finish, Stockton (6-Pane) windows*

# 2 Choose Your Color

## Standard Finishes



White



Almond



Sandstone

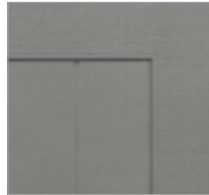


Brown

## Premium Finishes



Desert Tan



Gray



Terra Bronze



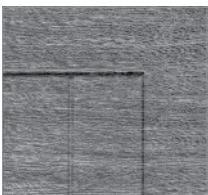
Black

## Premium Custom Finishes



Model 9510 is available with the TruChoice® Color System, Wayne Dalton's custom painting process that offers more than 6,000 colors. See your Dealer for details.

## Wood-Grain Finishes



Weathered Gray



Red Walnut

Actual colors may vary from brochure due to fluctuations in the printing process. Always request a color sample from your Dealer for accurate color matching.



### 3 Choose Your Windows



Plain Window Square



Stockbridge (3-Pane)



Stockbridge (4-Pane)



Stockton (6-Pane)



Stockton (8-Pane)



Plain Window Arched



Wyndbridge (3-Pane)



Wyndbridge (4-Pane)



Somerton (6-Pane)



Somerton (8-Pane)

Option of single or double arch for double car doors. Window size and shape may vary slightly based on door size. All windows are made using a single piece of glass with dividers. Clear, obscure and satin etched glass available in insulated and non-insulated.

### 4 Choose Your Hardware



Arrow



Aspen



Barcelona



Bean



Conifer



Fleur-de-Lis



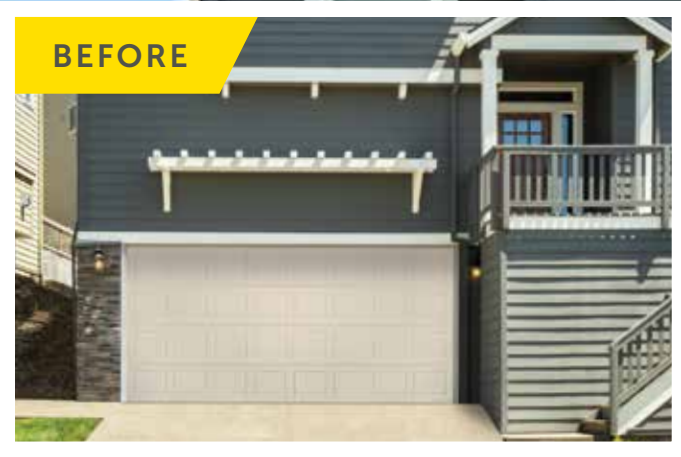
Spear



Vicksburg panel, Sandstone finish, Stockton (6-Pane) windows

AFTER

BEFORE



*Vicksburg panel, White finish, Stockton (6-Pane) windows, Decorative hardware*



# Garage Door Design Center

To see this door on your home, visit [wayne-dalton.com](http://wayne-dalton.com), or download our Garage Door Design Center app. Upload a photo of your home and experiment with panel designs, color options, window styles and decorative hardware designs. Instant curb appeal awaits you with just a click of your mouse.

**Wayne Dalton**  
GARAGE DOORS

DISTRIBUTED BY:

2501 S. State Hwy. 121 Bus., Ste 200  
Lewisville, TX 75067

[wayne-dalton.com](http://wayne-dalton.com)

