

K-AL

ALUMINUM FULL-VIEW



WHEN VISIBILITY AND LIGHT TRANSMISSION COUNT MOST

Wayne Dalton's K-AL Aluminum Full-View Doors are ideally suited for a variety of commercial applications ranging from car washes and tire stores to store fronts and other buildings where maximum light and visibility are desired. Available in Clear, Bronze and Black anodized or powder coated colors.

The Model K-AL door is sturdy, virtually maintenance free and weather resistant.

- » MAXIMIZES LIGHT AND VISIBILITY
- » WIDE RANGE OF GLASS OPTIONS
- » STANDARD SIZES UP TO 24' WIDE AND 18' HIGH
- » OPTIONAL INSULATED RAILS AND STILES AVAILABLE

STANDARD FEATURES OVERVIEW

CONSTRUCTION

MAX HEIGHT	18' (5,486 mm)
MAX WIDTH	24' (7,315 mm)
DOOR ASSEMBLY	Stile and rail assembly of aluminum alloy 6063-T6, 2" thick stiles and rails, joined with self tapping screws.
RAILS	Top and bottom rails with 3" wide, lower intermediate rail 1-3/8", upper rail 1-3/8", minimum wall thickness 0.062".
STILES	End stiles and center stiles are 3" wide, minimum wall thickness 0.062". Double end stiles are optional or as required by weight.
SPRINGS	10,000 cycles.
LOCK	Interior mounted slide lock.
WEATHERSTRIPPING	Flexible bulb-type strip at bottom section.
TRACK	Provide track as recommended by manufacturer to suit loading required and clearances available.
MANUAL OPERATION	Pull rope or chain hoist.
ELECTRIC MOTOR OPERATION	Provide UL listed electric operator, equal to Genie Commercial Operators, size and type as recommended by manufacturer to move door in either direction at not less than 2/3 foot or more than 1 foot per second.

WARRANTY

TERMS	Five (5) year limited
--------------	-----------------------

OPTIONS

- Springs: 25,000, 50,000 or 100,000 cycles.
- Lock options: Interior mounted slide lock with interlock switch for automatic operator, keyed lock, keyed lock with interlock switch for automatic operator.
- Weather stripping: Jamb and header seals.
- Insulated rails and stiles for a R-value* of up to 4.25
- Powder coat finish: White, Brown, Black, RAL
- Anodized finishes: Clear, Dark Bronze, Black
- Multiple 1/8", 1/4", 1/2" glass options available.

*Wayne Dalton uses a calculated door section R-value for our insulated doors.

Wayne Dalton's Aluminum Full-View Doors are the preferred choice when visibility and light transmission are just as important as aesthetics.

MATERIALS AND CONSTRUCTION

Aluminum Full-View sectional doors are weather-resistant and virtually maintenance free, and are ideal for commercial applications such as service stations, car washes, and auto dealerships. This door is perfectly suited for applications where maximum light and visibility are desired.

FINISH OPTIONS

Anodized



Clear (Standard)

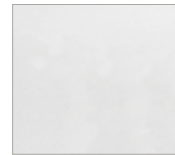


Dark Bronze

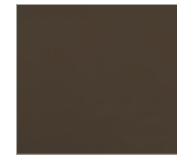


Black

Powder Coat (optional)



White



Brown



Black

Approximately 200 RAL powder coat finishes also available to complement the exterior colors of a building.



GLASS OPTIONS



Clear (Standard)



Gray Tinted



Green Tinted



Bronze Tinted



Low E



Satin Etched

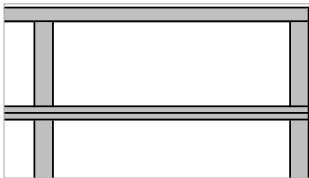


White Laminated

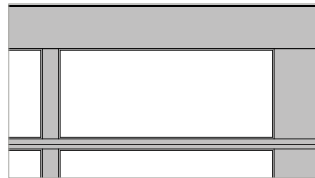


Obscure

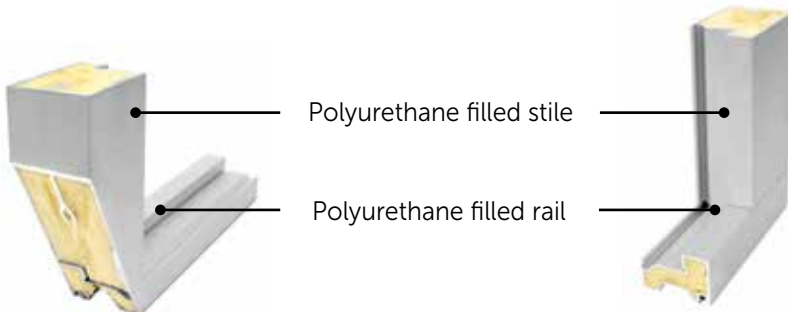
ALUMINUM FULL-VIEW



Light-glass frame



Heavy-glass frame



Large glass panels for maximum light and visibility.

2" thick sections with box-type extrusions.

2-1/4" integral reinforcing fin on large doors.

Vinyl weather seal between sections to minimize air and water infiltration.

6" bottom rail with integral reinforcing fin on doors over 16'2" wide. Optional on narrower doors.

6063T6 aluminum alloy with clear finish.



R-VALUES OF COMPLETE K-AL	10 X 10 DOOR	12 X 12 DOOR	14 X 14 DOOR
1/2" insulated glass Solar Ban 70XL argon filled (R = 3.125) with polyurethane filled rails and stiles	4.25	4.18	4.17
1/2" insulated glass Low E (R = 2.38) with polyurethane filled rails and stiles	3.60	3.52	3.52
1/2" insulated glass (R = 1.75) with polyurethane filled rails and stiles	3.05	2.96	2.96

GENERAL OPERATING CLEARANCES

TYPE	HEADROOM		SIDEROOM		DEPTH INTO ROOM	CENTER LINE OF SPRINGS	
	2" TRACK	3" TRACK	2" TRACK	3" TRACK	2" AND 3" TRACK	2" TRACK	3" TRACK
Standard Lift Manual 12" R	12 1/2"-17"	NA	4.5"	5.5"	Opening Height +18"	Opening Height +12"	N/A
Standard Lift Manual 14" R	14 1/2"-20"	NA				Opening Height +13"	N/A
Standard Lift Manual 15" R	NA	15 1/2"-21"				Opening Height +15"	
Standard Lift Motor Oper. 12" R	15 1/2"-19 1/2"	NA			Opening Height +66"	Opening Height +12"	N/A
Standard Lift Motor Oper. 14" R	16 1/2"-23"	NA				Opening Height +13"	N/A
Standard Lift Motor Oper. 15" R	NA	18 1/2"-24"					Opening Height +15"
High Lift Manual	High Lift +12"-16"		24" One Side		Opening Height -Lift +30"	Opening Height +Lift +6.5"	Opening Height +Lift +7.5"
High Lift Motor Oper.							
Vertical Lift Manual	Door Height +12"-24"		4.5"	5.5"	24"	Double Door Height + 6"	
Vertical Lift Motor Oper.			24" One Side				
Low Headroom Manual	6-14 1/2"	10-14 1/2"	6"	9"	Opening Height +30"	N/A	
Low Headroom Motor Oper.	9-14 1/2"	13-14 1/2"			Opening Height +66"		

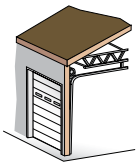
NOTES:

- For low headroom, springs must be rear mount to achieve minimum headroom listed. Front mount torsion headroom depends on drum size, and varies over the range listed. See approval drawing.
- Side-room of 8" required, one side, for doors with chain hoist.
- Headroom depends on drum size, and varies over the range listed. See approval drawing.

PANEL/SECTION SELECTION GUIDE

DOOR WIDTH	NUMBER OF PANELS	DOOR HEIGHT	NUMBER OF SECTIONS
Up to 8'3" W	2	Up to 8'1"	4
9'4" to 12'3"	3	8'2" to 10'1"	5
12'4" to 16'3"	4	10'2" to 12'1"	6
16'4" to 20'3"	5	12'2" to 14'1"	7
20'4" to 23'7"	6	14'2" to 16'1"	8
23'8" to 24'2"	7	16'2" to 18'1"	9

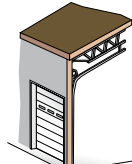
TRACK SELECTION GUIDE



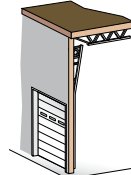
STANDARD LIFT



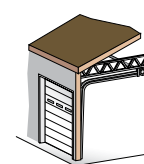
HIGH LIFT
break-away is standard, straight incline is available



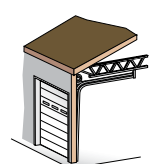
ROOF PITCH
standard or high lift



VERTICAL LIFT
break-away is standard, straight incline is available



LOW HEADROOM
rear mount torsion



LOW HEADROOM
front mount torsion



Architect Resource Center

Visit wayne-dalton.com/architect-resource-center to find our Architect Resource Center. In this tool, you will quickly find all of the specifications, drawings and documents you need to complete your project.

Wayne Dalton
COMMERCIAL DOORS

DISTRIBUTED BY:

2501 S. State Hwy. 121 Bus., Ste 200
Lewisville, TX 75067

wayne-dalton.com

