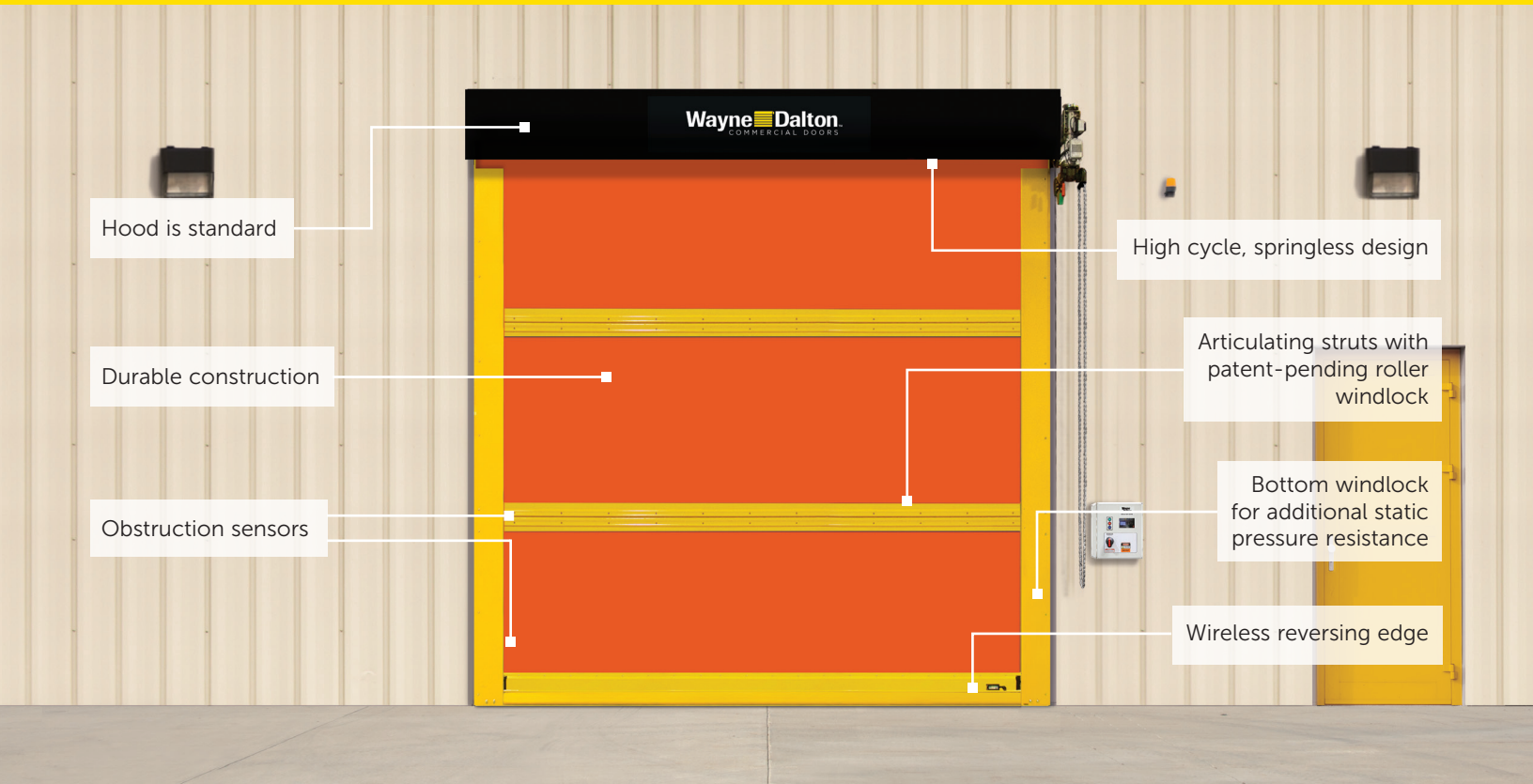


# MODEL 884 ADV-X

STRUTTED EXTERIOR HEAVY-DUTY HIGH SPEED FABRIC DOOR



## Strutted Exterior Door

The heaviest fabric door in the ADV-X series, Model 884 ADV-X is designed for exterior applications where weather elements may be extreme.

### High Cycle Design

- Springless design requires minimal interruption for maintenance
- Direct-mounted gear drive minimizes wear and tear
- Variable frequency drive eliminates sudden jolts from door start/stop

### Heavy-duty guide construction

- 0.188" thick high strength steel

### Applications

- Manufacturing/Heavy manufacturing
- Warehouse/Distribution
- Large opening
- Mining
- Parking garages
- Auto/Transport

### Articulating Strut Design

- Patent-pending articulating roller wind strut reduces noise and allows for quick panel replacement while reducing curtain deflection under pressure; allows door to operate under wind load

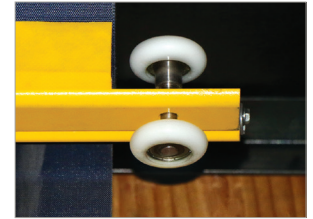
### Low Maintenance

- Breakaway design with impact detection and push button self-repair; plug and play wiring (reduces the need for licensed electrician)

# MODEL 884 ADV-X STRUTTED EXTERIOR HEAVY-DUTY HIGH SPEED FABRIC DOOR

## TECHNICAL INFORMATION

ATTRIBUTES	GENERAL SPECIFICATIONS
Application	Exterior
Maximum width	24'
Maximum height	18' at 24' wide or 20' at 23' wide
Opening speed	Up to 55"/sec
Closing speed	Up to 40"/sec
Break-away self reset	Yes
Pressure/wind resistance*	Up to 22.0 psf or 158 mph
Operational pressure**	Up to 5.0 psf or 75 mph
Wind strut	4" articulating roller wind strut
Door panel	3 layers of PVC-coated polyester with 2 layers of polyester weave
Vision	20" high windows spaced evenly across width of door
Operation	Direct drive motor and gearbox system with a door stop device
Control	Variable frequency drive NEMA 4X cULus listed Onboard self diagnostic and service reminder Built-in padlockable field disconnect
Obstruction detection	Infrared sensors mounted in-plane to the door curtain at 18" and 50" - 54" from floor
Reversing safety edge	Wireless reversing edge
Electrical availability	230V AC 3PH, 460V AC 3PH, 575V AC 3PH



Wind strut with roller windlock



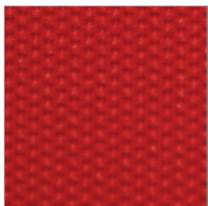
Bottom windlock

\* Pressure/wind resistance value is the ultimate pressure tested at door width of 20'. The mph is determined in accordance to ASCE 7-10 EXP B.  
\*\*Operational pressure value is the pressure tested up to 100,000 cycles at door width of 24'.

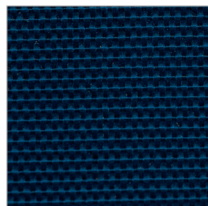
## DOOR OPTIONS

- 20" high windows spaced evenly across width of door
- Multiple actuation options – push button, motion detector, radio control, key switch, pull switch, loop detector, treadle switch
- Signaling devices – red/green LED warning light, horn/strobe combination, rotating warning light

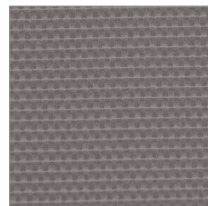
## COLOR OPTION



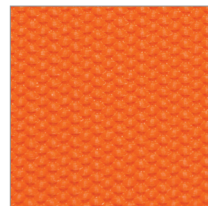
Red



Blue



Gray



Orange



5-Year Limited Warranty

Standard color for guides, brackets, struts and bottom bar is yellow. Approximately 200 optional RAL powder coat colors are also available.