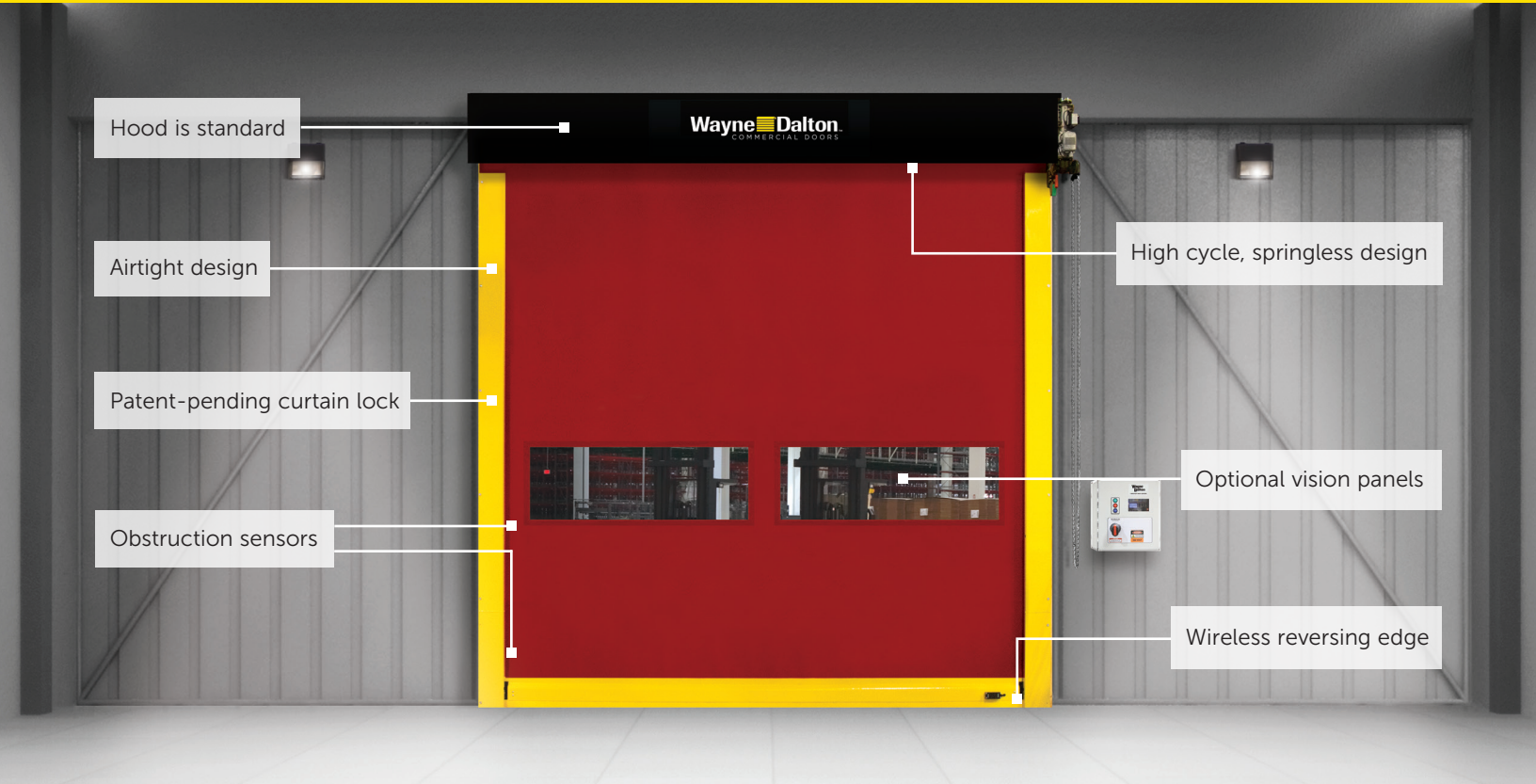


MODEL 881 ADV-X

INTERIOR HIGH SPEED FABRIC DOOR



Economical and Versatile

The Model 881 ADV-X is designed to be used indoors in high traffic and environmentally controlled areas.

High Cycle Design

- Springless design requires minimal interruption for maintenance
- Direct-mounted gear drive minimizes wear and tear
- Variable frequency drive eliminates sudden jolts from door start/stop

Independently-Tested Airtight Design

- Prevents airborne contaminants from entering a controlled environment and reduces air exchange to no higher than .236 cfm/sf (ASTM E-283)

Applications

- Manufacturing/Heavy Manufacturing • Warehouse/Distribution • Pharmaceutical • Food and Beverage • Cold Storage

Strutless Design

- Lowers the operational noise of the door for quiet and smooth operation

Patent-Pending Curtain Lock

- Makes door easy to repair in the field

Low Maintenance

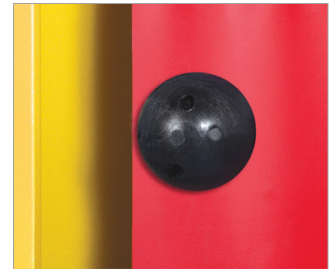
- Breakaway design with impact detection and push button self-repair; plug and play wiring

MODEL 881 ADV-X

INTERIOR HIGH SPEED FABRIC DOOR

TECHNICAL INFORMATION

ATTRIBUTES	GENERAL SPECIFICATIONS
Application	Interior
Maximum width	14'
Maximum height	14'
Opening speed	Up to 70"/sec
Closing speed	Up to 40"/sec
Certified air tightness*	< 0.236 cfm/sq ft
Break-away self reset	Yes
Pressure/wind resistance**	Up to 7.5 psf or 90 mph
Operational pressure***	Up to 2.5 psf or 53 mph
Door panel	2 layers of PVC-coated polyester with 1 layer of polyester weave
Vision	20" high windows spaced evenly across width of door
Curtain lock	Standard
Operation	Direct drive motor and gearbox system with a door stop device
Control	Variable frequency drive NEMA 4X cULus listed Onboard self diagnostic and service reminder Built-in padlockable field disconnect
Obstruction detection	Infrared sensors mounted in-plane to the door curtain at 18" and 50"- 54" from floor
Reversing safety edge	Wireless reversing edge
Electrical availability	120V AC 1PH, 230V AC 1PH, 230V AC 3PH, 460V AC 3PH, 575V AC 3PH



Patent-pending curtain lock

* Air tightness is independently tested to ASTM E283 test standard.

** Pressure/wind resistance value is the ultimate pressure tested at door width of 10'. The mph is determined in accordance to ASCE 7-10 EXP B.

***Operational pressure value is the pressure tested up to 100,000 cycles at door width of 10'.

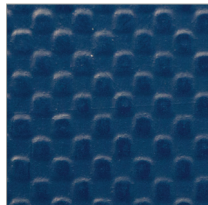
DOOR OPTIONS

- 20" high windows spaced evenly across width of door
- Multiple actuation options – push button, motion detector, radio control, key switch, pull switch, loop detector, treadle switch
- Signaling devices – red/green LED warning light, horn/strobe combination, rotating warning light

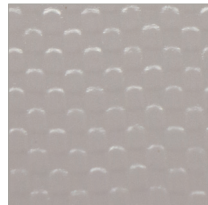
COLOR OPTION



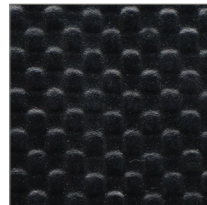
Red



Blue



Gray



Black



5-Year Limited Warranty

Standard color for guides, brackets, struts and bottom bar is yellow. Approximately 200 optional RAL powder coat colors are also available.