



Classicdrive™ 8 ft. Tall Door Extension Kit Installation Insert

Use these instructions in conjunction with the main installation instructions. Follow the corresponding steps in this insert with the steps in the installation manual, provided with the operator.

INSTALLING INTERMEDIATE RAILS

Use **Step 1** below in place of "Assembly Step One: Rail Assembly" from the manual.

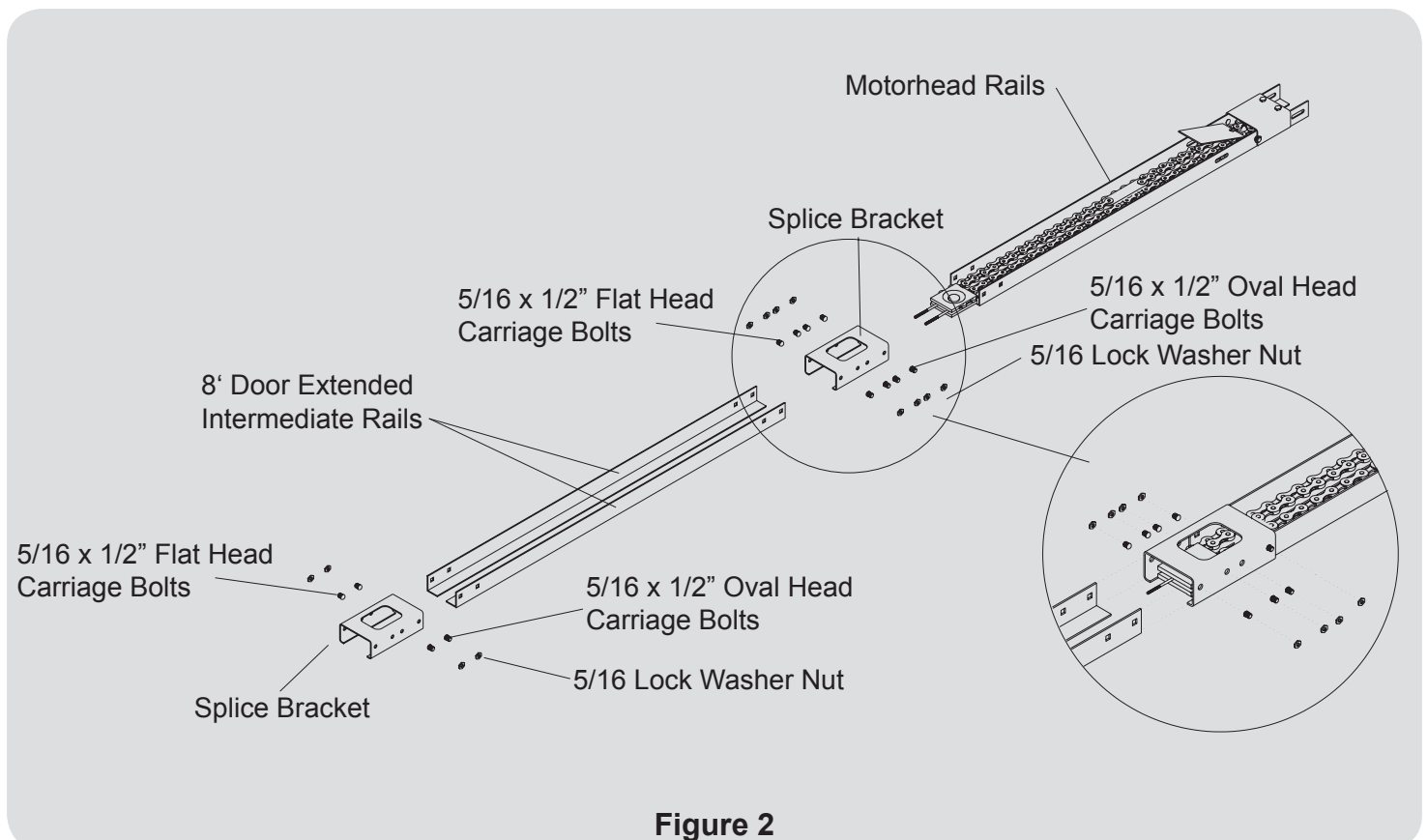
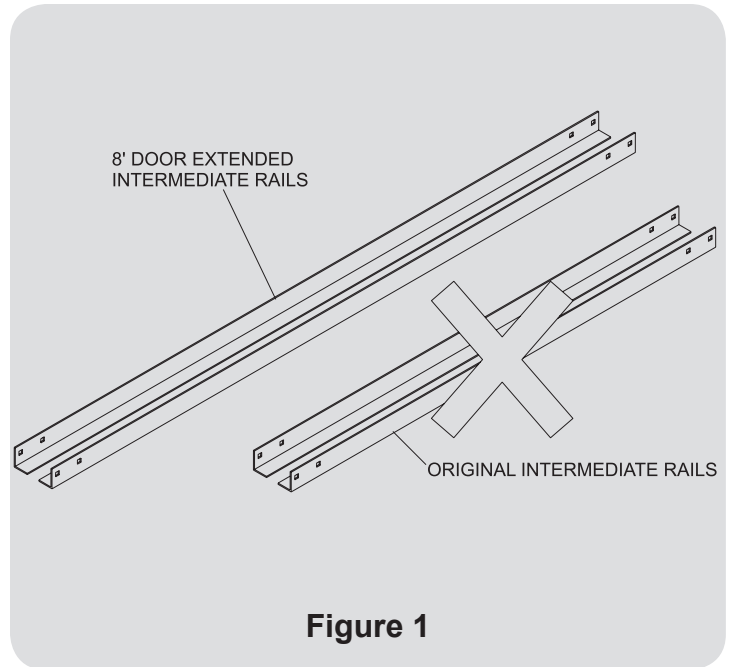
► **Step 1**

Discard the intermediate rails that originally came with the Classicdrive™ operator (They are not used for assembly). (see **Figure 1**)

Locate the rails, which came with the Classicdrive™ 8 ft. Door Extension Kit. These rails will be used for the assembly.

Pre-position parts for assembly. Bolt the Motorhead rails to the first splice bracket, then bolt the extended intermediate rails to the same splice bracket, using 5/16" x 1/2" carriage bolts and 5/16" lock washer nuts. The rounded head will be on the inside of the rails and the nuts outside. Bolt the second splice bracket to the extended intermediate rails, leaving the four holes on the splice bracket open for the front rails. (see **Figure 2**).

Note: Keep in mind that the rails will have to be adjusted later, so finger tighten the bolts first. The bolts will have to be tightened after the rail alignment is adjusted.



INSTALLING CHAIN EXTENSION

Use **Step 4** below in place of “Assembly Step Four: Setting the Chain” from the manual.

► **Step 4**

Pull the chain assembly to the front rails, keeping it free from twists and kinks. Disassemble the chain link at front side of the Chain Latch by using a screw driver to push the clip off of the master link. When the clip is removed, the master link will slide apart.

Attach the 24” chain extension between the Chain Latch and the open end of the chain, using the master link previously removed and the master link supplied with the 8’ Tall Door Extension Kit. Secure the chain links with the clips. (see **Figure 3**).

IMPORTANT! Ensure that chain is NOT twisted or kinked before you continue.

Pull chain assembly and a “U” bolt to the front rail bracket. Remove lock nuts from the “U” bolt and insert the “U” bolt through the holes in the front rail bracket and fasten with the two 5/16” lock nuts. Ensure that the chain is on the sprocket gear of the motorhead, and finger tighten the nuts equally. (see **Figure 4**)

Caution: Do not remove plastic tie from chain.

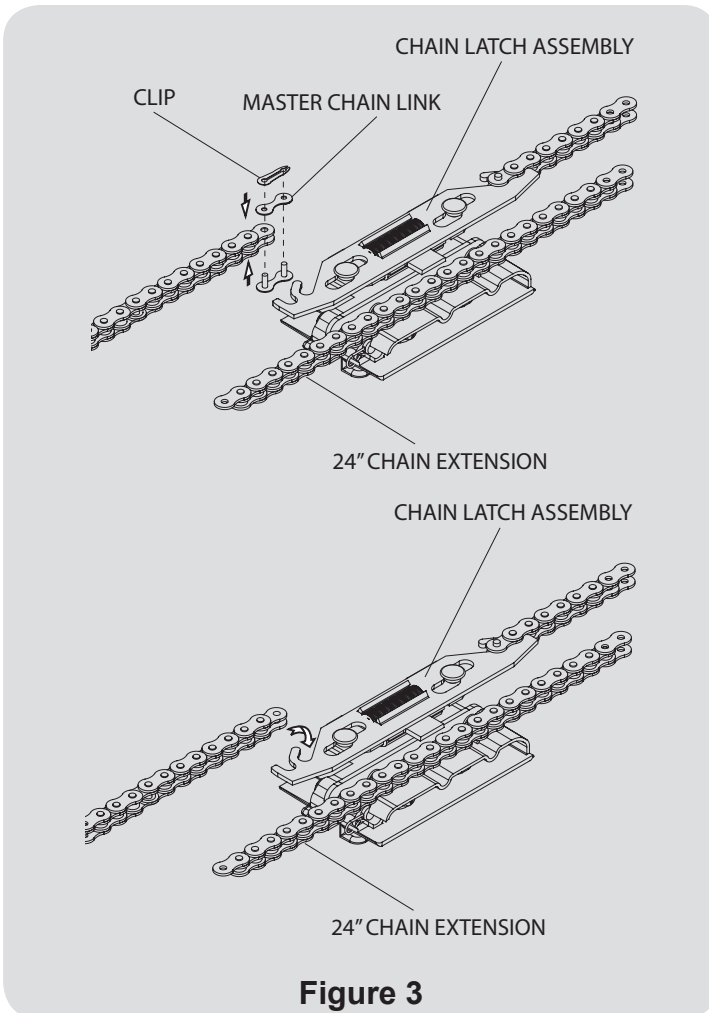


Figure 3

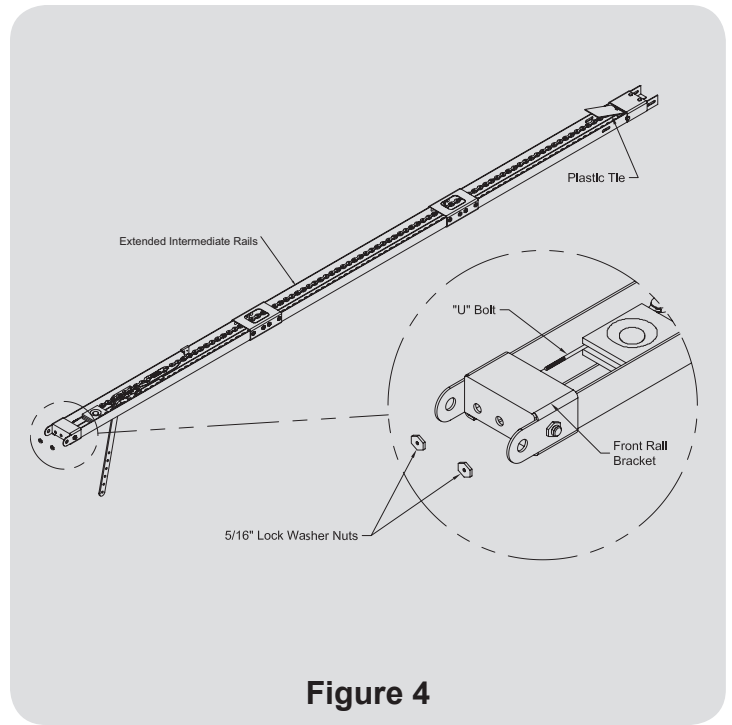


Figure 4

Use **Step 6** below in place of “Assembly Step Six: Adjustments” from the manual.

► **Step 6**

Track Alignment: Turn the rail assembly upside down and place the plastic rail guide tool onto the meeting point of the two rails. Tighten down the 5/16” carriage bolts on the side of the splice bracket with the rail guide and then move rail guide to other side and tighten remaining bolts. Turn rail back to original position. (see **Figure 5**)

Remove Plastic Tie: Remove the plastic tie from the chain. Ensure that the chain is on the sprocket gear.

“U” Bolt: Tighten down the “U” bolt evenly, so that the chain is approximately 5/8” above the rails.

Initial Trolley Placement: Position the trolley (with chain latch assembly attached) 5 to 6 inches from front chain guide. (see **Figure 6**)

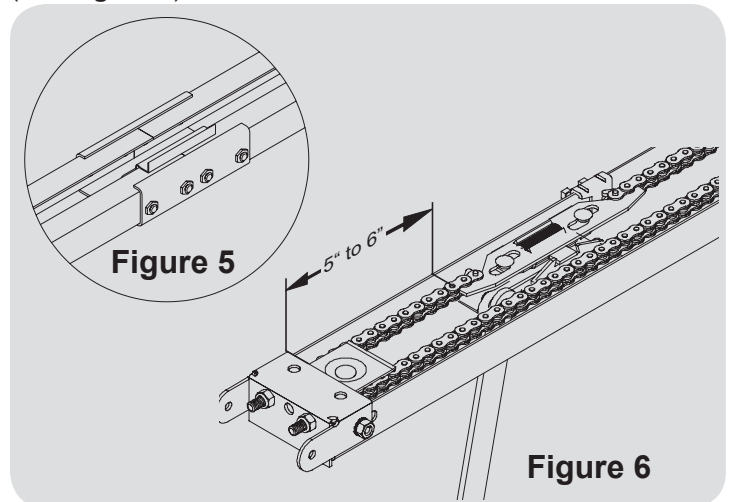


Figure 6

Proceed to “Assembly Step Seven: Attaching Motor Head Unit to Rails” in the main instruction manual.