



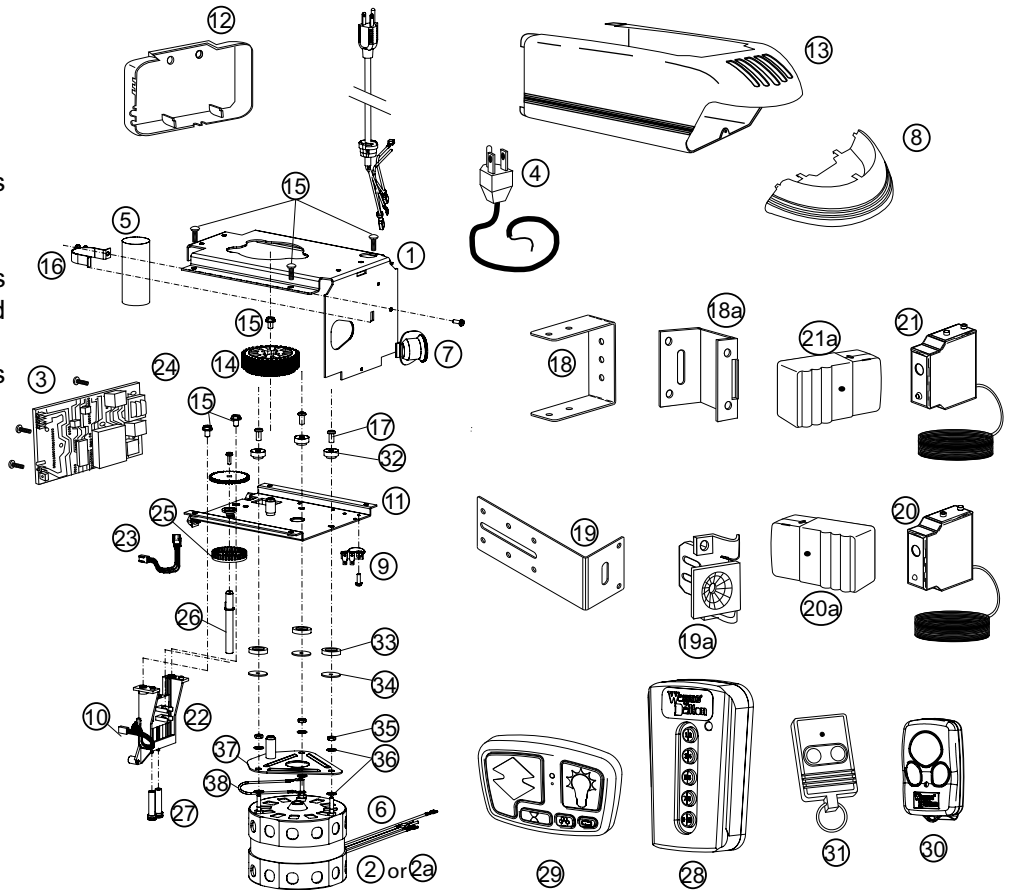
Quantum™

Supplemental Installation Instructions

Wayne-Dalton Corp.
 P.O. Box 67 Mt. Hope, OH 44660
 (888) 827-3667
 www.wayne-dalton.com

Use this insert in conjunction with the Installation Instructions and Owners Manual provided with the opener.

This supplemental insert replaces "Parts Breakdown Power Head Assembly And Accessories" in the Quantum™ Installation Instructions and Owners Manual.



#.	Part #	Description	Per Unit	#.	Part #	Description	# Per Unit
1.	157167	Frame	1	20.	260597	Wired Receiving Unit	1
2.	292123 or 291385	Motor – 1/2 H.P.	1	20a.	260598	Wireless Transponder Unit	1
2a.	291386 or 291387	Motor – 1/3 H.P.	1	21.	260600	Wired Sending Unit	1
3.	306132	Motor Control Board (all models)	1	21a.	260599	Wireless Sending Unit	1
4.	306364	Power Supply Cord	1	22.	252092	Limit Assembly (includes items #10, 27 & 26)	1
5.	260570	Capacitor – 1/2 H.P.	1	23.	249321	LED interrupter	1
6.	306486	Wiring Harness	1	24.	260556	Limit Driver Gear	1
7.	269028	Light Socket	1	25.	157039	Interrupter Disk	1
8.	260552	Lens	1	26.	260557	Shaft, Limit Driver	1
9.	252994	MOV Surge Suppressor	1	27.	157055	Limit Adjuster	2
10.	252993	Limit Switch	1	28.	306134	5 Button Wireless Keyless Entry	1
11.	252125	Sub-Frame	1	29.	300625	5 Button Wall-station	1
12.	260532	End-Cap	1	30.	312962	3 Button Mini/ Visor Transmitter	1
13.	260530	Housing	1	31.	299264	2 Button Mini Transmitter	1
14.	260525	Gear, Driven	1	32.	317515	Step Bushing Rubber	3
15.	251248	Screw 1/4-20 x 3/8"	7	33.	317510	Reverse Step Bushing Rubber	3
16.	301675	Capacitor Clamp	1	34.	317513	Nylon Washer 3/16" I.D.	3
17.	317514	Barrel nut #10-32 x 1/2"	3	35.	157666	Hex Nut #10-32	3
18.	157166	Wired Sensor Mounting Bracket	2	36.	157585	Lock Washer #10	6
18a.	157159	Wireless Sensor Wall Mounting Bracket	2	37.	317981	Motor Isolation Plate	1
19.	157165	Wired Sensor Sliding Bracket	2	38.	317516	Ground Wire	1
19a.	157162	Wireless Sensor Mounting Bracket	2				