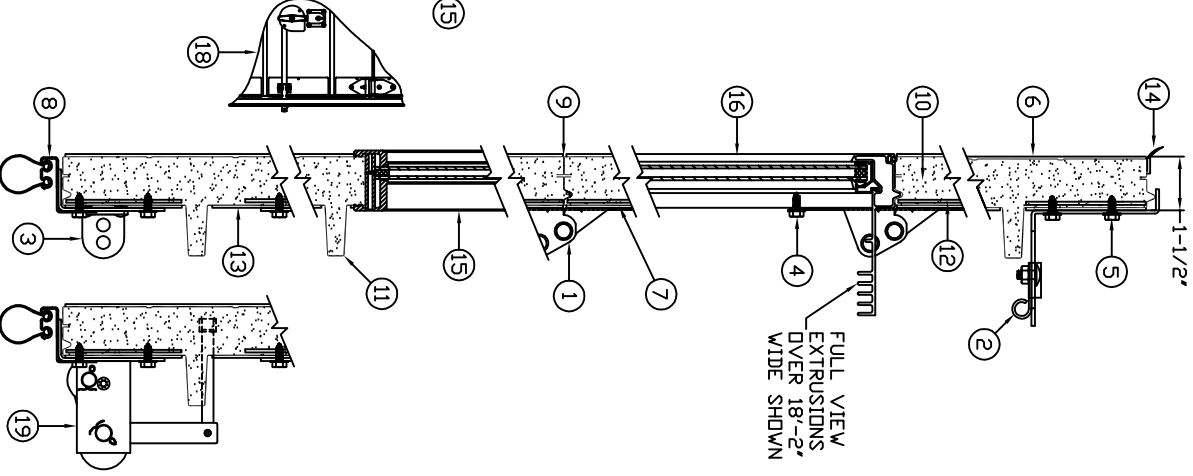
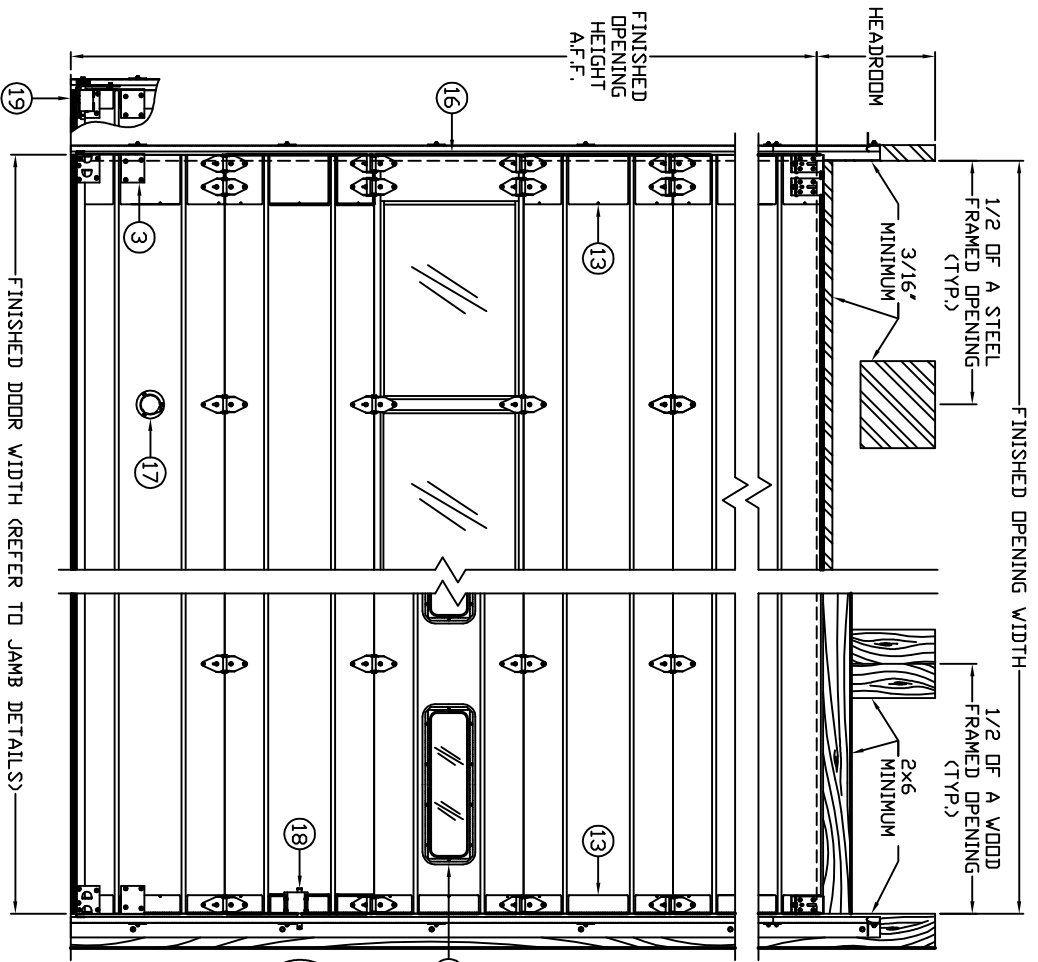


## THERMOSPAN™ 150 INSULATED OVERHEAD DOORS

PROJECT: \_\_\_\_\_ CONTRACTOR: \_\_\_\_\_ ARCHITECT: \_\_\_\_\_ DOOR DISTRIBUTOR: \_\_\_\_\_

FRAMING NOTE: WAYNE-DALTON CORP. DESIGN ENGINEERS EACH COMMERCIAL SECTIONAL OVERHEAD GARAGE DOOR FOR INDIVIDUAL APPLICATIONS BASED ON PRODUCT & OPTIONS REQUIRED. ONE, TWO OR FOUR SPRING TORSION ASSEMBLIES ARE TYPICALLY SUPPLIED AS STANDARD. DUAL TORSION SHAFT ASSEMBLIES ARE SUPPLIED WHEN REQUIRED. WHEN IT IS TIME TO PREPARE THE OPENINGS(S) FOR INSTALLATION OF A WAYNE-DALTON PRODUCT, CONTACT OUR CUSTOMER SERVICE REPRESENTATIVES FOR MOUNTING PAD LOCATIONS.



### STANDARD FEATURES

1. GRADUATED HOT-DIPPED GALVANIZED STEEL END HINGES (14 GAUGE MINIMUM).
2. ADJUSTABLE HOT-DIPPED GALVANIZED STEEL TOP BRACKETS.
3. HOT-DIPPED GALVANIZED STEEL BOTTOM BRACKETS WITH CABLE ATTACHMENT.
4. (4) 1/4-20 TEK SCREWS PER TOP HINGE.
5. (4) 1/4-20 TEK SCREWS PER TOP BRACKET.
6. EXTERIOR-HOT-DIPPED GALVANIZED STEEL .022" MINIMUM EMBOSSED NON-REPEATING RANDOM STUCCO PATTERN WITH (7) ROLL-FORMED SHALLOW HORIZONTAL RIBS. PRE-PAINTED PRIOR TO ROLL-FORMING (2 MIL PRIMER & .7 MIL POLYESTER FINISH COAT).
7. INTERIOR-HOT-DIPPED GALVANIZED SMOOTH STEEL PRE-PAINTED PRIOR TO ROLL-FORMING (.6 MIL POLYESTER WHITE FINISH COAT).
8. 20 GA. HOT-DIPPED GALVANIZED STEEL RETAINER WITH PVC 'BULB-SHAPED' BOTTOM ASTRAGAL.
9. TONGUE & GROOVE JOINT WITH JOINT SEAL.
10. CFC FREE POLYURETHANE CODE SANDWICH-TYPE CONSTRUCTION INCLUDES THERMAL BREAKS EACH SECTION. ASHRAE CALCULATED R-VALUE = 14.16 (2) 1-3/4" INTEGRAL ROLL-FORMED STRUTS PER SECTION.
12. 20 GA. BUILT-IN REINFORCEMENT PLATES FOR HARDWARE ATTACHMENT.
13. HOT-DIPPED GALVANIZED STEEL WRAP-AROUND END CAPS.
18. GA-SINGLE END HARDWARE (UP TO 14'-2" WIDE).
16. GA-DOUBLE END HARDWARE (OVER 14'-2" WIDE).

U.S. PATENT PRODUCT 4238544 - 4339487

### FREQUENTLY SELECTED OPTIONS

14.  PVC TOP SECTION HEAD SEAL
15. 24x6 LITES WITH HIGH-IMPACT POLYMER FRAME.
  - 1/2" DOUBLE INSULATED SSB THERMOLITE
  - 1/4" ACRYLIC (PLEXIGLASS)
  - 1/4" POLYCARBONATE (LEXAN)
  - 1/4" POLISHED WIRE GLASS
  - 1/2" DOUBLE INSULATED TEMPERED THERMOLITE

\_\_\_\_ No. SECTIONS GLAZED

16. ALUMINUM FULL VIEW SECTION:  WHITE  BROWN
  - 1/8" DSB
  - 1/8" ACRYLIC (PLEXIGLASS)
  - 1/8" TEMPERED GLASS
  - 1/8" POLYCARBONATE (LEXAN)
  - 1/4" TEMPERED PLATE GLASS
  - 1/4" POLISHED WIRE GLASS
  - 1/4" PLATE GLASS
  - 1/4" ACRYLIC (PLEXIGLASS)
  - 1/4" POLYCARBONATE (LEXAN)
  - 1/2" DOUBLE INSULATED (SSB GLASS)
  - 1/2" DOUBLE INSULATED (TEMPERED GLASS)

\_\_\_\_ No. FULL VIEW SECTIONS

17.  3" EXHAUST PORT (CENTERED BOTTOM SECTION).
18.  OMIT LOCKING (INSIDE SIDE LOCK STANDARD) (NOT AVAILABLE IN ALUMINUM FULL VIEW).
19.  CABLE FAILURE DEVICE.

INTERIOR ELEVATION

CONSTRUCTION