

Rim Cylinder / Night Double Lockbar Lock

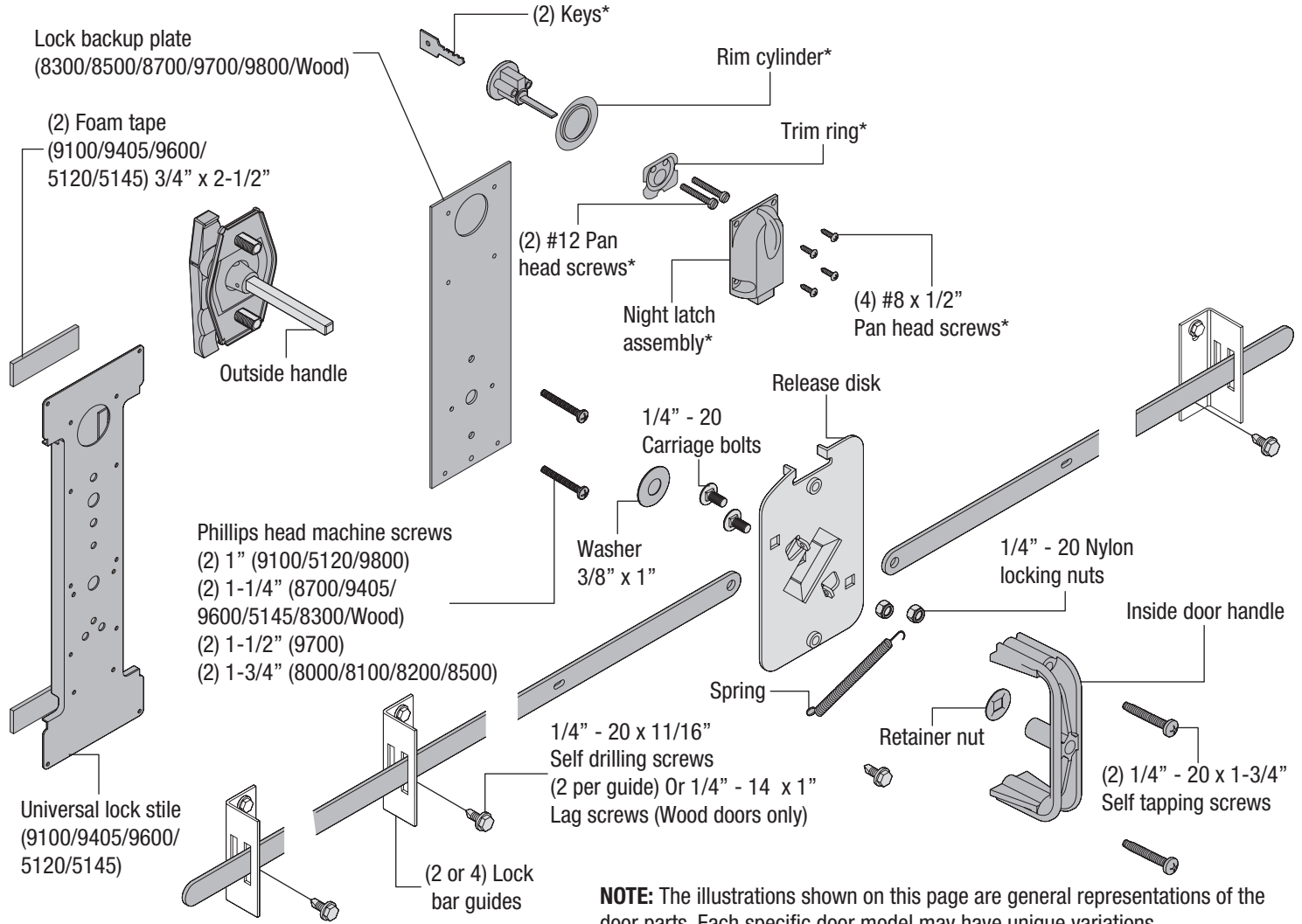


Installation Instructions and Owner's Manual

All Residential Door Models: 5000, 9700, 9800, 8000, 9000 Series & Wood Doors

www.Wayne-Dalton.com

PARTS BREAKDOWN



TOOLS REQUIRED:

- (1) Electric Drill
- (1) 1/8" Drill Bit
- (1) 3/4" Dia. Hole Saw
- (1) 7/16" 6 Point Nut Driver
- (1) 7/16" Wrench Or Socket
- (1) Pliers/Wire Cutter
- (1) Phillips Screw Driver
- (1) Standard Screw Driver
- (1) Center Punch

IMPORTANT NOTICE! REFER TO THE DOOR MODEL INSTALLATION INSTRUCTIONS MANUAL FOR IMPORTANT SAFETY NOTICES.

INSTALLATION

1

Drilling Lock Section

CAUTION

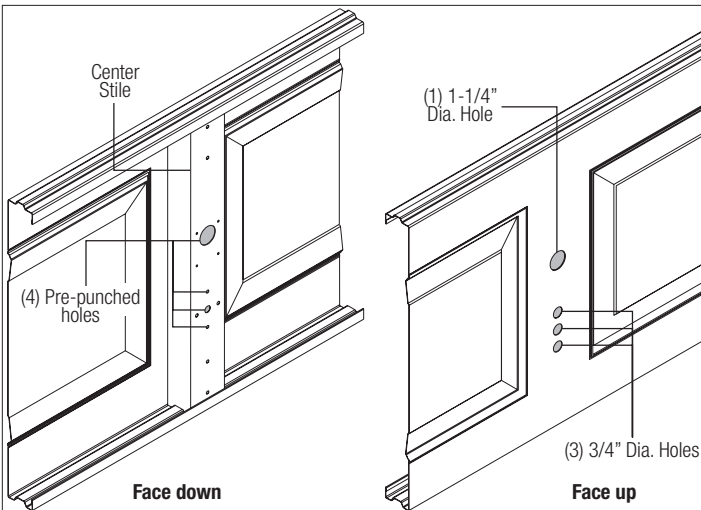
DO NOT DRILL LOCK SECTION OR INSTALL LOCK ON DOORS WITH OPENERS. THE DOOR AND/ OR OPENER MAY BE DAMAGED IF THE OPENER IS USED WHILE THE DOOR IS LOCKED.

NOTE: Common practice for doors with the odd number of raised panels is to mount the lock towards the right side of the section when looking out.

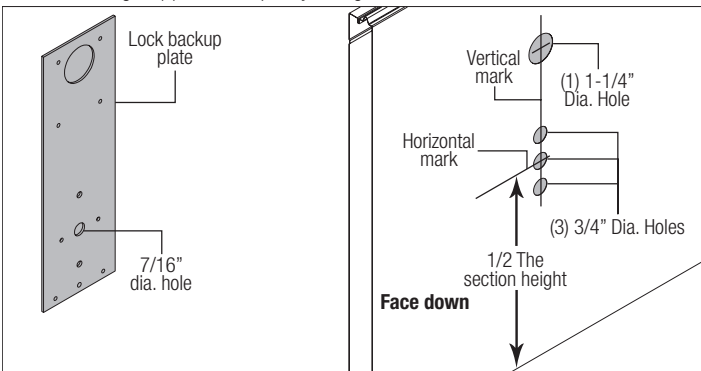
IMPORTANT: REMOVE ALL BURRS FROM THE DRILLED HOLES BEFORE INSTALLING THE LOCK TO THE SECTION.

8000 / 8100 / 8200 DOORS: Place the lock section face down on (2) padded sawhorses for a single car door or (3) padded sawhorses for a double car door. Locate the (4) hole pattern in the center stile of the lock section. Use the (4) holes as a template to drill (4) 1/8" holes through the section. Flip the section over, face up. With the section face up, enlarge the (3) bottom holes to 3/4" diameter and the top hole to 1-1/4" diameter, pay close attention not to drill completely through section into center stile.

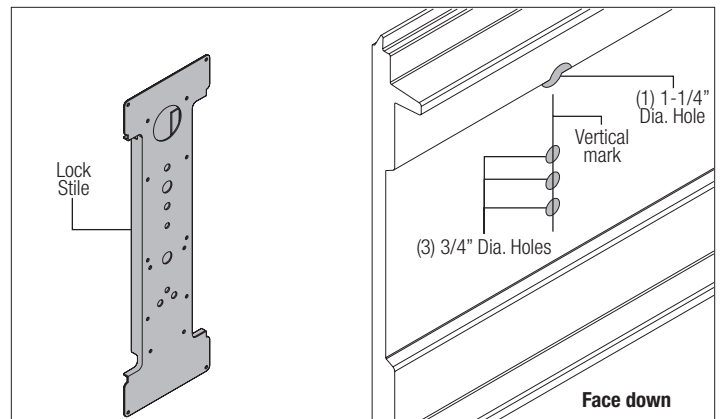
NOTE: Do not drill through or enlarge holes in the center stile.



9800 / 9700 / 8300 / 8500 / 8700 & WOOD DOORS: Place the lock section face up on (2) padded sawhorses for a single car door or (3) padded sawhorses for a double car door. Locate the middle of the center stile, measure the distance from the end of the section to the middle of the center stile. Turn the section face down, transfer the measurement and mark a light vertical line, then mark a horizontal line at half the section height. Align the 7/16" diameter hole of the lock backup plate at the intersection point of the horizontal and vertical marks, use the lock backup plate as a template to mark the (4) holes, remove the lock backup plate and drill the (3) bottom holes to 3/4" diameter and the top hole to 1-1/4" diameter, drilling all (4) holes completely through the section.



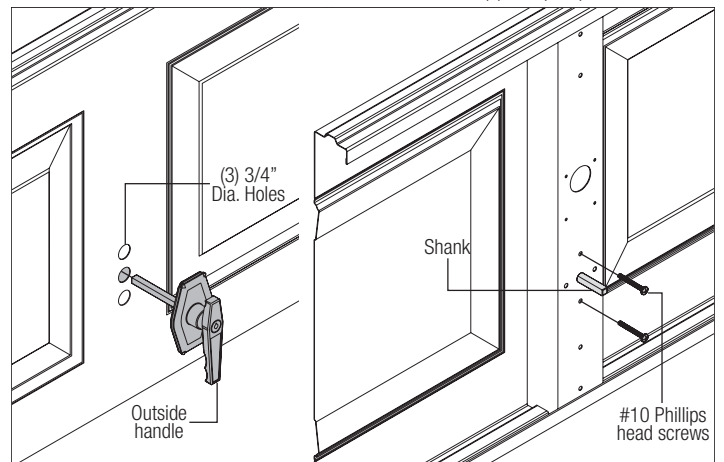
5120 / 5145 / 9100 / 9405 & 9600 DOORS: Place the lock section face up on (2) padded sawhorses for a single car door or (3) padded sawhorses for a double car door. Locate the middle of the center stile, measure the distance from the end of the section to the middle of the center stile. Turn the section face down, transfer the measurement and mark a light vertical line. Align the center of the lock stile with vertical mark, use the lock stile as a template to mark the (4) holes, remove the lock stile and drill the (3) bottom holes to 3/4" diameter and the top hole to 1-1/4" diameter, drilling all (4) holes completely through the section.



2

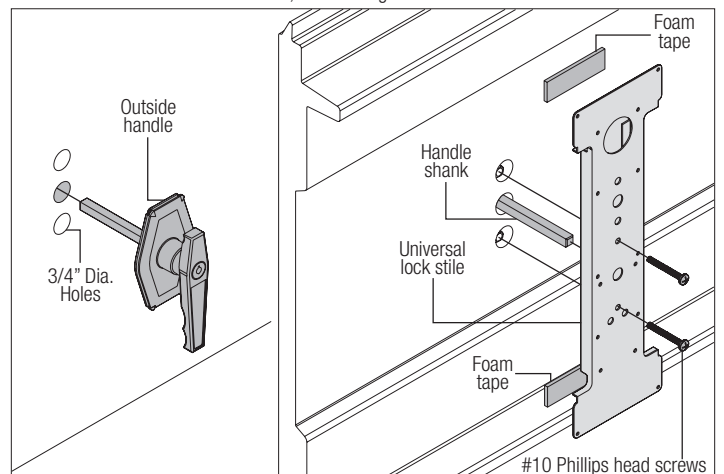
Outside Lock Handle Assembly

8000 / 8100 / 8200 DOORS: Align the outside handle assembly with the handle pointing towards the floor and insert the assembly through the previously drilled 3/4" diameter holes in the section. Secure the outside lock handle to the section with (2) #10 phillips head screws.



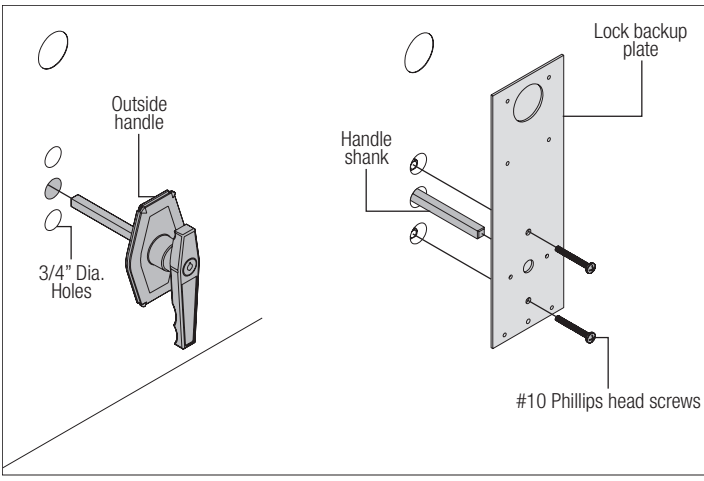
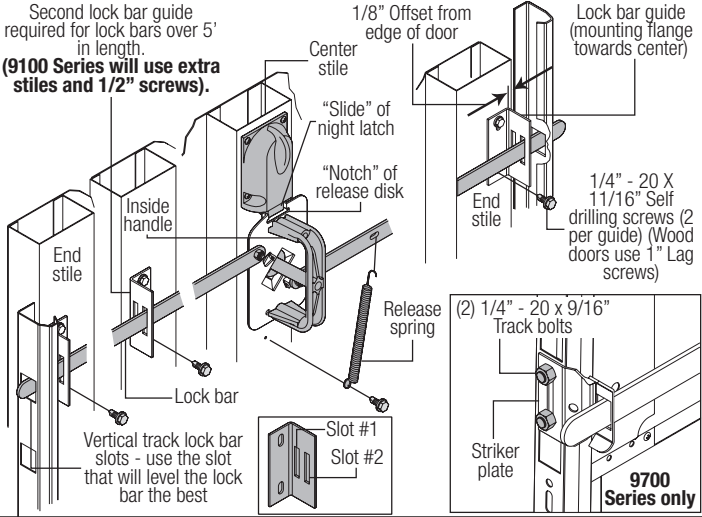
5120 / 5145 / 8300 / 8500 / 9700 / 9800 / 9100 / 9405 / 9600 AND WOOD DOORS: Align the outside handle assembly with the handle pointing towards the floor and insert the assembly through the previously drilled 3/4" diameter holes in the section. With the outside lock placed in the section, place the center lock stile over the shank of the outside lock handle, secure the center lock stile with foam tape (8300 / 8500 / 8700 / 9800 / 9700 and Wood doors will use the lock backup plate with no foam tape). Secure the outside lock handle to the section by placing the (2) #10 phillips head machine screws through the lock stile into the lock section.

NOTE: For 5145 / 9405 series doors, seal the v-groove with a bead of clear silicone caulk.



4 Installing The Lock bar Guides

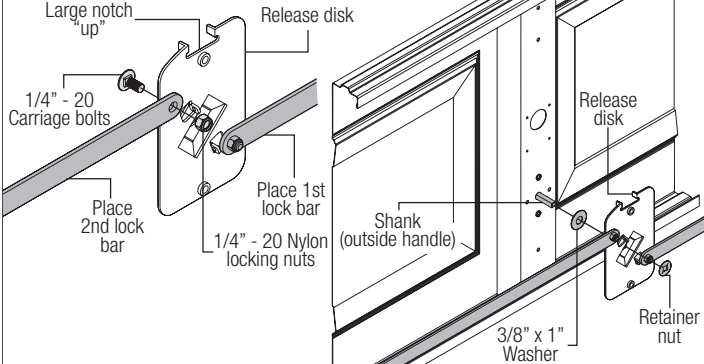
Remove the tape attaching the lock bars to the section. Using slot #2, slide the required number of lock bar guides over the lock bars with the mounting flange towards the center of the section. Lock bars 5' or less require (1) guide each and over 5' require (2) guides each. Position, as level as possible, the ends of the lock bars into the square slots of the vertical track. Turn the inside handle counterclockwise until the notch in the release disk aligns with the slide of the night latch. Turn the key in the night latch to secure the lock assembly. Verify the lock bar ends engage the vertical track slots. Position the lock bar guides at the end of the section, 1/8" back from the edge. Attach the lock bar guide to the end stile with (2) 1/4" - 20 x 11/16" self drilling screws each (Wood doors use 1/4" - 20 x 1" lag screws). For lock bars over 5', position the second lock bar guide in the middle of the lock bar and secure the guide with (2) 1/4" - 20 x 11/16" self tapping screws each (Wood doors use 1/4" - 20 x 1" lag screws). Unlock the night latch and turn the inside handle clockwise. Hook the open loop of the release spring into the slot of the right lock bar. Insert the 1/4" - 20 x 11/16" self drilling screw through the closed loop of the release spring and secure it into the lock backup plate hole below the lock assembly. Operate the lock several times to make sure the lock bars move in and out of the vertical track smoothly. Adjust the lock bar guides up or down, if necessary.



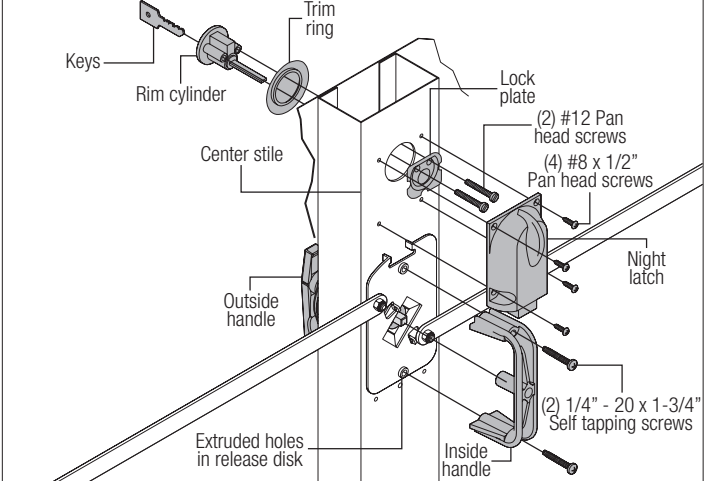
3 Inside Handle / Lock Assembly

Hold the disk with the large notch of the release disk pointing up. Using 1/4" - 20 carriage bolts and nylon locking nuts, fasten lock bars to disk. Do not overtighten nuts, bars must be free to rotate, (see Fig. 6).

First place the 3/8" x 1" washer over the square steel shank. Hold the handle which is pointing towards the floor with one hand and place the disk assembly over the square steel shank of the outside handle. Push the retainer nut onto the shank until the free play in the assembly is taken up. Operate the lock to make sure it functions properly. If the lock operates too hard, loosen the retainer nut slightly. Place the inside handle over the extruded holes in the release disk. Secure the handle with (2) 1/4" - 20 x 1-3/4" self tapping screws. Insert the rim cylinder through the trim ring and into the section with the teeth side of the key pointing away from the outside handle.



Place the lock plate over the 1-1/4" diameter center stile hole and fasten with (2) #12 pan head screws into the rim cylinder. In addition, align the night latch slide with the notch in the top of the release disk. Fasten the night latch to the center stile with (4) #8 x 1/2" pan head screws.



NOTE: Follow the Main Installation Instruction Manual to install the door sections and vertical track before you install the remainder of the lock parts. After the sections and track are installed, continue with Step 4.